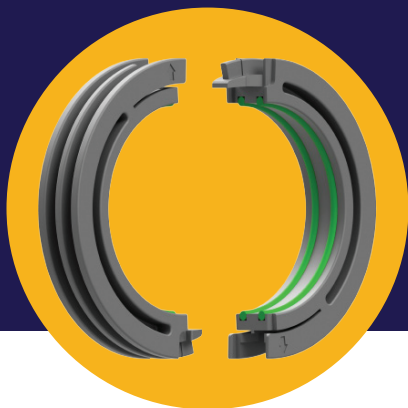


ASSEMBLY INSTRUCTIONS

3D PRINTED COMPOSITE TRIPLE LABYRINTH SEAL

www.bowmansplitbearings.com

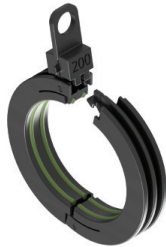


A division of Bowman International Ltd

BOWMAN[®]
SPLIT BEARINGS



Insert tool, aligning arrows
on seal and tool



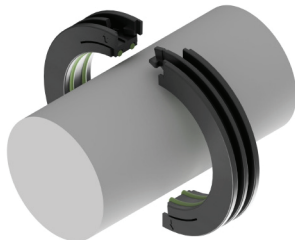
Press and hold tool whilst applying
light pressure to the bore of the seal
until the joint separates



Repeat action on the
opposite side



Pull both seal halves apart



The seals can be installed before or after the radial and axial bearings are assembled. If fitted before the bearing, slide the seals axially away from each side of the bearing position allowing space to assemble the bearing.

- Lightly lubricate the bore of each seal half, ensuring the 'O' rings remain in place
- Place both halves around the shaft ensuring male and female joints are aligned
- Clip the two halves together so that all the 'arrow-head' is retained in the corresponding recess
- Grip the seal at the joints and move the assembled seal into the correct position by sliding along the shaft
- Greasing the labyrinth before closing the cartridge serves to lubricate the seals and adds an additional grease barrier against contamination
- Seals rotate with the shaft and axially align themselves with their corresponding cartridge grooves during operation